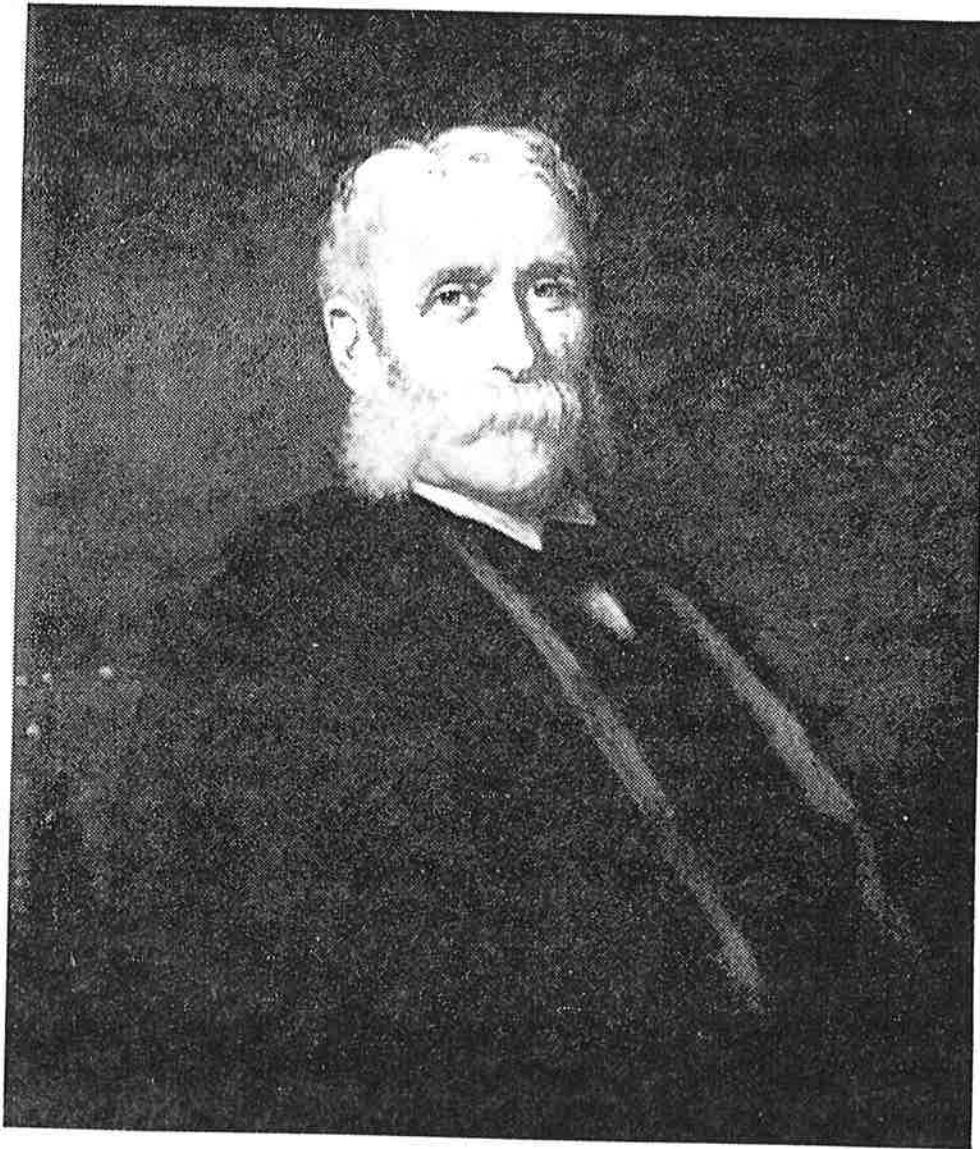


Cat. 41.0
after Johnson



No. 137

HUGH N. CAMP

Member of the Chamber, 1861-1870; 1876-1895

Painted by Thomas W. Wood, 1896

after Eastman Johnson

1902; portrait presented by Mr. Bush, painted from life in 1924 by Leopold Seyffert.

BUTLER, CHARLES—No. 147 (1802–1897). Member of the Chamber, 1861–97; began business as a lawyer; interested in the development of Chicago; invested largely in railroads having terminals there; did much for educational institutions of the country; founder and President of Union Theological Seminary in New York; portrait presented by his daughter, Emily O. Butler, painted in 1899 by Howard Russell Butler from a photograph taken on his 94th birthday.

✓ CAMP, HUGH N.—No. 137 (1827–1895). Member of the Chamber, 1861–70, 1876–95; spent early years in sugar refining business but later became active in real estate, improving large tracts in the city; portrait presented by his family, painted in 1896 by Thomas W. Wood after an original by Eastman Johnson.

CANNON, JAMES G.—No. 224 (1858–1916). Member of the Chamber, 1887–1916; Treasurer, 1900–08; Chairman, Committee on Finance and Currency, 1908–11; Chairman, Executive Committee, 1911–14; Vice-President, 1914–16; entered Fifth Avenue Bank as a messenger in 1876; worked up through